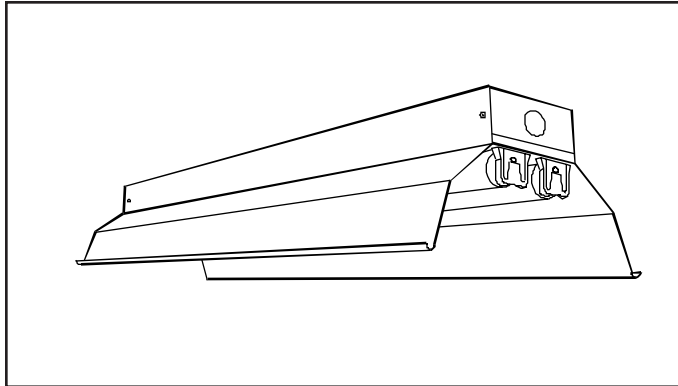




# FLUORESCENT REFLECTOR STRIPS INDUSTRIAL - COMMERCIAL

# NIR

FLUORESCENT LAMPS 32 W/T8



Date: \_\_\_\_\_  
 Project Name: \_\_\_\_\_  
 Fixture type: \_\_\_\_\_  
 Cat. No: \_\_\_\_\_  
 Volts: \_\_\_\_\_  
 Ballast type: \_\_\_\_\_

---

Variants: \_\_\_\_\_  
 \_\_\_\_\_  
 \_\_\_\_\_

## Specifications:

**GENERAL:** Highly efficient industrial fluorescent luminaire. Reflector provides a wide distribution of light with a shielding angle of 15° below horizontal. Suitable for surface or pendant installation as individual or in continuous row. Provision for stem or chain suspension.

**SHIELDING:** Die formed reflector from code gauge steel. High gloss, baked white polyester finish.

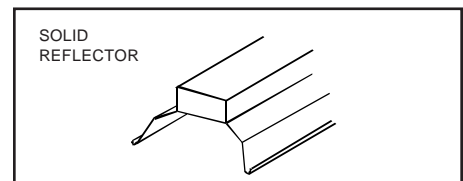
**HOUSING:** Rigid die-formed from code gauge steel. Finish white polyester powder coating. Steel parts are chemically cleaned and phosphatized ensuring maximum paint adhesion. K.O. provided for stem or chain suspension. Break-off end plates serve as joiners for continuous row installation.

**ELECTRICAL:** Units are equipped with certified electronic instant start ballasts 120 vac. 60Hz. Other ballasts and voltages are available upon request. Lampholders medium bi-pin.

**CERTIFIED:** CSA and/or UL.

	LAMPS	"L"	CAT. NO.	WEIGHT
	1-32 W / T8	4'	<b>NIR-4-132-</b>	6 Kg (13 lb.)
	2-32 W / T8*	8'	<b>NIR-8-232-</b>	10 Kg (22 lb.)
	2-32 W / T8	4'	<b>NIR-4-232-</b>	6 Kg (13 lb.)
	4-32 W / T8*	8'	<b>NIR-8-432-</b>	12 Kg (26 lbs)

\* LAMPS IN TANDEM



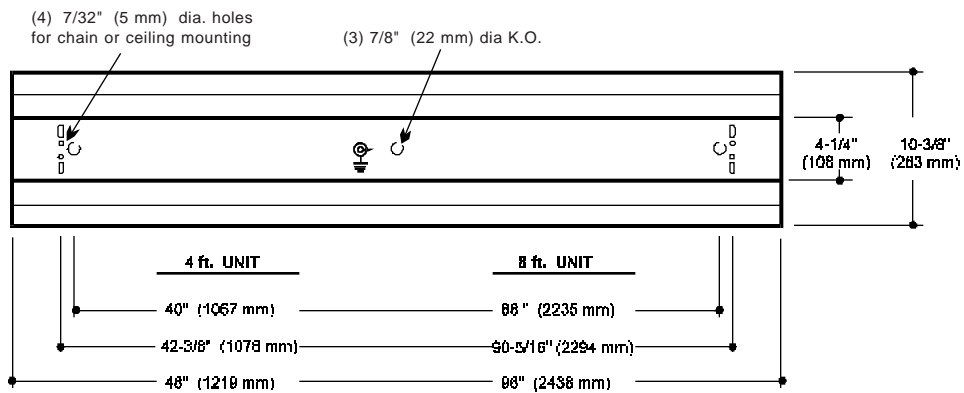
**ORDERING GUIDE:**  
 CAT. NO. + VOLTS + BALLAST

120	EL = Electronic
277	
347	

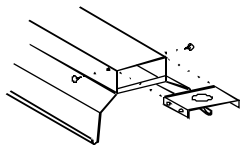
Example: **NIR-4-232-120-EL**

# Details:

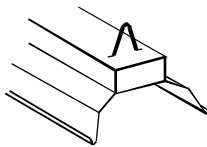
NOTE:  
8 ft. units with lamps in tandem constitute (2) 4 ft. reflectors and (1) 8 ft. housing.



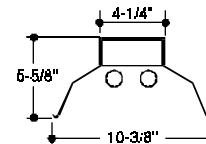
Top view of Luminaire



Break-away section of end plates serve as a coupler for continuous row installation



"V" link for chain suspension  
CAT. NO. VL-1



Cross-section View

# Photometric Data:

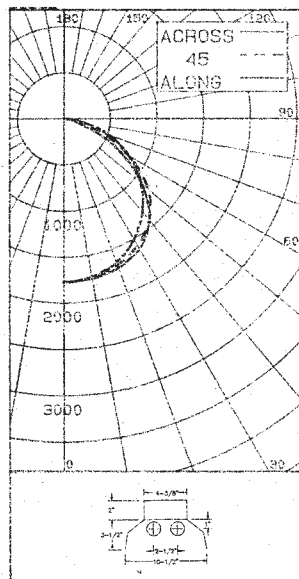


LIGHTING SCIENCES CANADA LTD.

440 Phillip St. Unit 19, Waterloo, Ont, Canada N2L 5R9  
Tel: (519) 746-3140 Fax: (519) 746-3156

CERTIFIED TEST REPORT NO. LSC 1582  
COMPUTED BY LSC PROGRAM \*\*TEST-LITE\*\*

PEERLESS ELECTRIC FLUORESCENT FIXTURE MODEL NO. NIR-248  
WITH OPEN-ENDED WHITE REFLECTOR  
TWO F40CW FLUORESCENT LAMPS. LUMEN RATING = 3150 LMS.



CANDLEPOWER SUMMARY		OUTPUT LUMENS			
ANGLE	ALONG	22.5	45	67.5	ACROSS
0	1768	1768	1768	1768	1768
5	1761	1745	1765	1774	1765
10	1741	1728	1743	1756	1757
15	1699	1704	1713	1748	1737
20	1649	1658	1683	1722	1717
25	1586	1593	1636	1687	1674
30	1507	1535	1580	1629	1630
35	1416	1449	1515	1559	1544
40	1320	1363	1432	1445	1435
45	1210	1253	1320	1306	1277
50	1079	1145	1185	1129	1092
55	956	1022	1005	930	894
60	819	886	820	728	685
65	670	727	618	524	475
70	515	545	425	290	252
75	364	362	214	164	166
80	205	192	126	102	97
85	62	80	64	41	30
90	2	34	20	1	0

ZONAL LUMENS AND PERCENTAGES

ZONE	LUMENS	% LAMP	% LUMINAIRE
0-30	1411	22.41	27.33
0-40	2351	37.32	45.53
0-50	4208	66.80	81.48
0-60	5164	81.99	100.00
40-90	2813	44.66	54.47
50-90	956	15.18	18.52
90-180	0	.00	.00
0-180	5164	81.99	100.00

\*\* EFFICIENCY = 82.0% \*\*

LUMINANCE SUMMARY - CD. / SQ. H. PAINT REFLECTANCE = .93 S/MH = 1.4  
SC(ALONG) = 1.3, SC(ACROSS) = 1.4  
CERTIFIED BY:

ANGLE	ALONG	45	ACROSS
45	5279	5896	5998
55	4996	5421	5177
65	4536	4371	3737
75	3655	2298	2127
85	1392	1529	1154

DATE: NOV 16, 1987  
PREPARED FOR:  
PEERLESS ELECTRIC COMPANY LTD.  
MONTREAL, QUEBEC

TESTED ACCORDING TO IES PROCEDURES. TEST DISTANCE = 8 METERS (26 FT.)

## COEFFICIENTS OF UTILIZATION

ZONAL CAVITY METHOD

EFFECTIVE FLOOR CAVITY REFLECTANCE = 20%

CC WALL	80				70				50			
	70	50	30	10	70	50	30	10	50	30	10	
RCR	0	.98	.98	.98	.98	.95	.95	.95	.95	.91	.91	.91
	1	.90	.87	.83	.81	.88	.85	.82	.79	.81	.79	.77
	2	.83	.77	.72	.67	.81	.75	.70	.66	.72	.68	.65
	3	.76	.68	.62	.57	.74	.67	.61	.56	.64	.59	.55
	4	.70	.60	.54	.48	.68	.59	.53	.48	.57	.52	.47
	5	.64	.53	.46	.41	.62	.52	.46	.41	.51	.45	.40
	6	.59	.48	.41	.36	.57	.47	.40	.35	.45	.40	.35
	7	.54	.43	.36	.31	.52	.42	.35	.31	.41	.35	.30
	8	.49	.38	.31	.27	.48	.38	.31	.26	.37	.31	.26
	9	.45	.35	.28	.23	.44	.34	.27	.23	.33	.27	.23
	10	.42	.31	.24	.20	.41	.31	.24	.20	.30	.24	.20

INPUT WATTS = 90.0

# PEERLESS ELECTRIC CO. LTD

9145 BOIVIN, LASALLE, QUE. H8R 2E5 TEL. (514) 595-1671  
161 BARTLEY DRIVE, TORONTO, ONT. M4A 1E6 TEL. (416) 751-5644