

# SDLA-ODL



**PEERLESS**  
electric-électrique

INCEP|TION

# CONCEPT

The SDLA-ODL is a **LED luminaire** for **recessed** installation. Square frosted acrylic lens. One-piece body constructed from code gauge steel. The fixture's drop design provides a superior quality of diffused lighting. Custom drop heights are available, consult factory. Ideal for architecture and commercial environments.

## CERTIFICATION

Approved to UL1598 and CSA C22.2 No. 250 standards\*\*

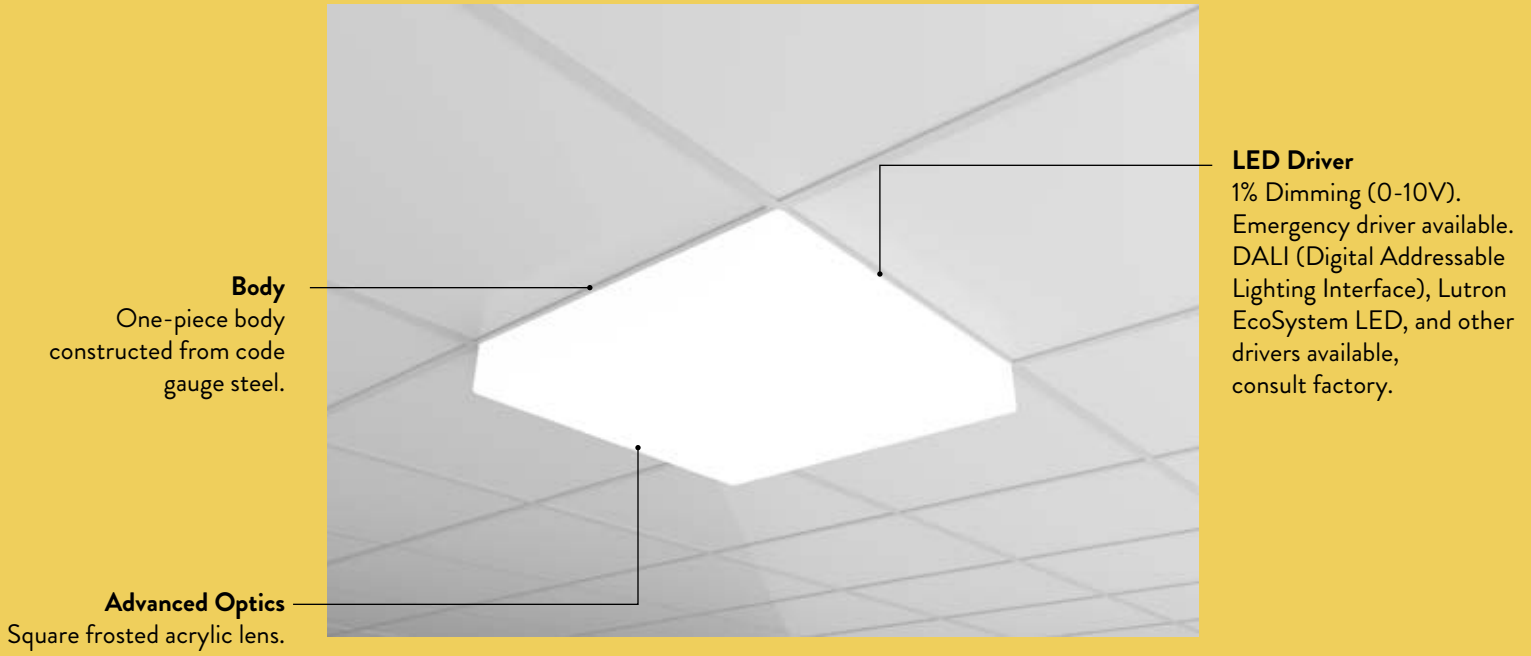
Suitable for damp locations.



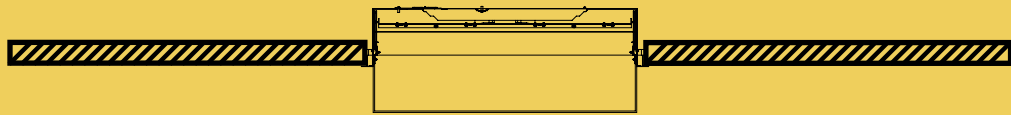
\*LED Five (5) year limited warranty. \*\*\*Complies with Buy American Act.  
 \*\*Operating temperature: -20°C to +35°C / -4°F to +95°F, consult factory for operating temperatures outside the listed range.  
 Specifications are subject to change. Please confirm latest specifications prior to placing order.

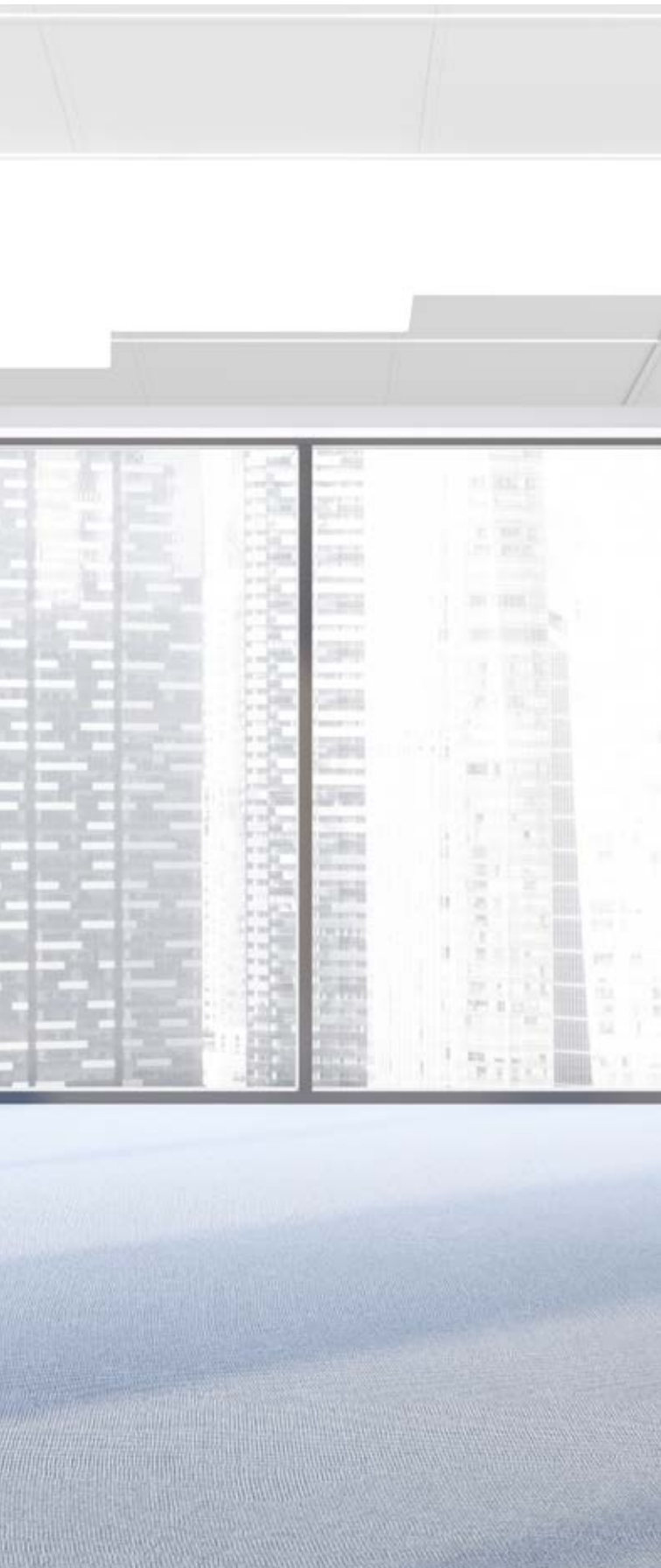


## STRUCTURE



## MOUNTING





## CUSTOM CONFIGURATIONS



SDLA-ODL is a perfect luminaire to create unique lighting configurations.

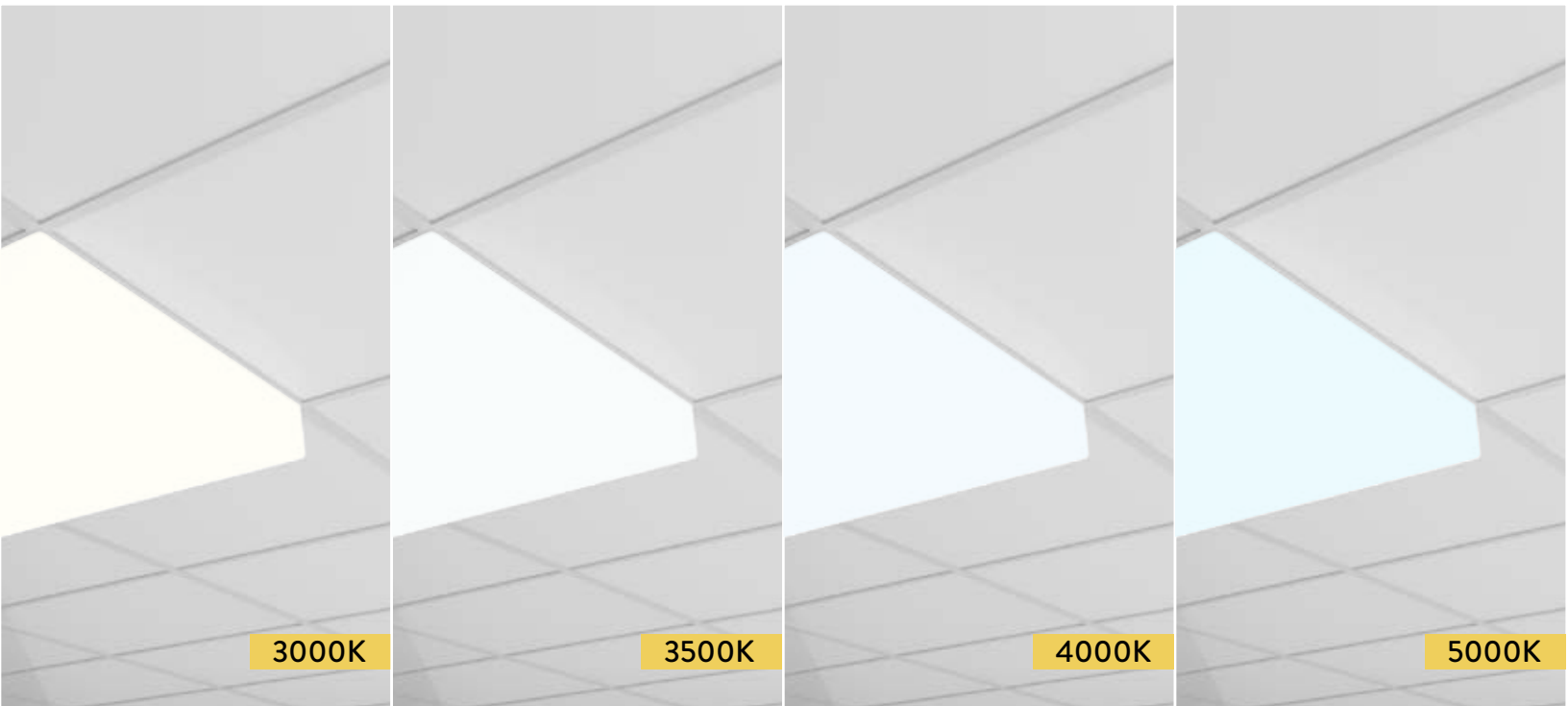


## PHOTOMETRIC DATA



SDLA-ODL-4-22G-25-40K

0°-180°   
90°-270° 



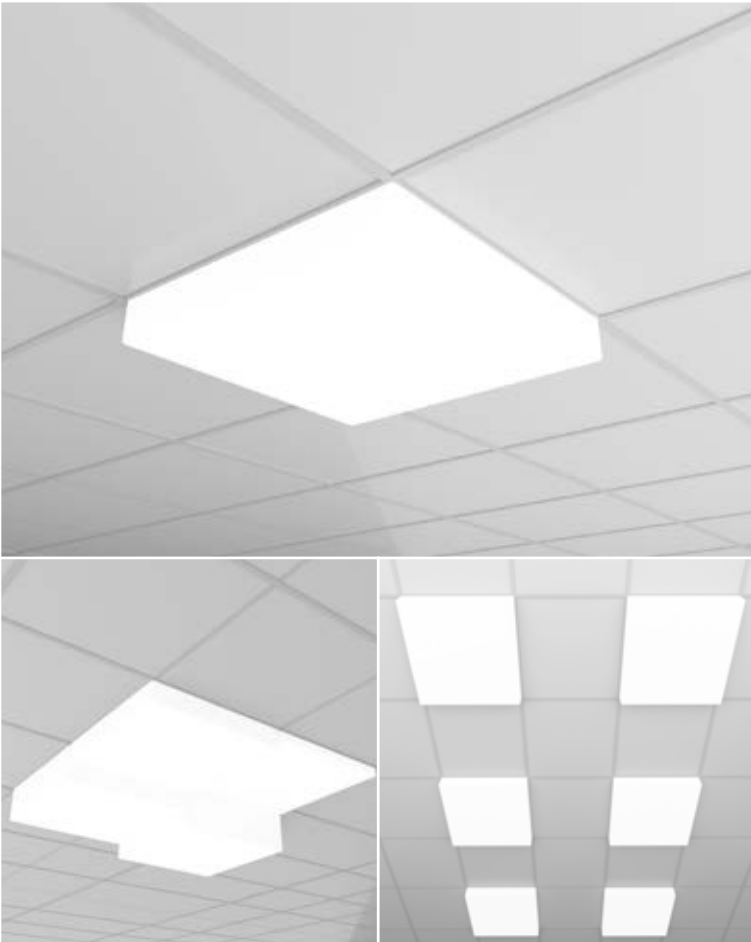
## TUNABLE WHITE FUNCTION OPTIONS

Available in 3000K, 3500K, 4000K and 5000K



## COLOR

Standard finish is matte white polyester baked powder coat enamel. Matte grey and black available. Custom colours available.

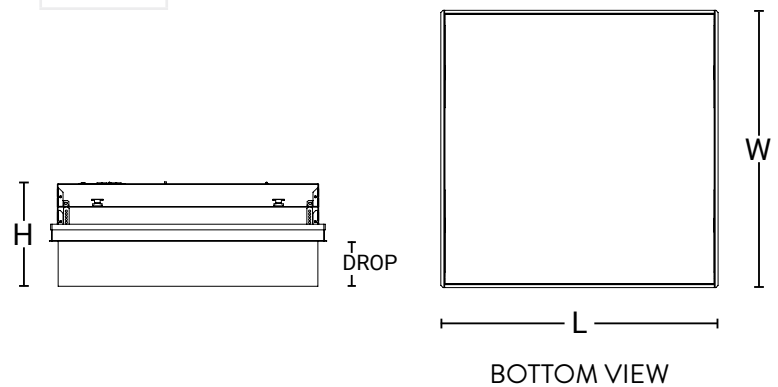


## DIMENSIONS

SIZE	L	W	H
22G	23.60"	23.60"	5.00"

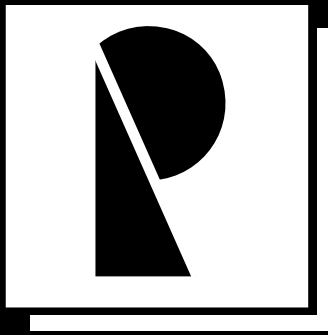
DROP
1.00"
4.00"
7.00"

\*other drop height options available, consult factory



## ORDERING INFORMATION

SDLA	ODL		22			
FIXTURE	SHIELDING	DROP	SIZE	LUMENS	CCT	DRIVER
SDLA	ODL = Opal Drop Lens	1 = 1" 4 = 4" 7 = 7" *other drop heights options available, consult factory	22G = 2' x 2' T-Bar Ceiling	10 = 1000lm 15 = 1500lm 20 = 2000lm 25 = 2500lm 30 = 3000lm 35 = 3500lm 40 = 4000lm	30K = 3000K 35K = 3500K 40K = 4000K 50K = 5000K TW = Tunable White *Other CCT, RGB (Red, Green, Blue LEDs), DM (dim to warm) available, consult factory	MV = Standard 120V-277V 1% Dimming (0-10V) 347 = Standard 347V Dimming (0-10V) EM = Emergency Driver X = DALI, Lutron EcoSystem LED, and other drivers available, consult factory



OFFICE:

255-438 Isabey  
St-Laurent, QC H4T 1V3  
T: 514.595.1671  
F: 514.595.4411

PRODUCTION:

2900 Loyalist Str.  
Cornwall, ON K6H 6C8  
T: 613.510.1268  
F: 613.510.1268

[info@peerless-electric.com](mailto:info@peerless-electric.com)  
Peerless-Electric.com