

NSL-B-SYM

Industrial Mini Lighting Strips

PROJECT:

CAT.NO:

NOTES:

DATE:

TYPE:

VOLTS:

PEERLUX[®]
SERIES

GENERAL DESCRIPTION

Mini lighting strips with symmetric reflectors for general or task lighting. Designed for T5 and T8 lamps.

CONSTRUCTION

Fabricated from code gauge steel.

FINISH

Standard finish is high gloss white polyester powder coat paint. Baked white enamel.

REFLECTOR

Symmetrical light distribution.

ELECTRICAL

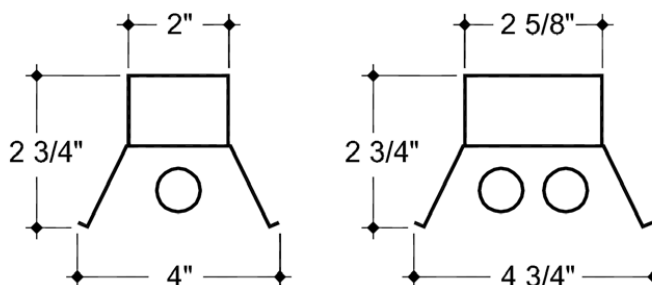
Instant start electronic ballast, 120V-50/60Hz. Other ballasts and voltages available upon request.

CERTIFICATIONS

CSA and/or UL approved.



DIMENSIONS



ORDERING INFORMATION

NSL-B									
FIXTURE	MODULE (NOMINAL)	LAMPS	WATTS	REFLECTOR	REFLECTOR FINISH	MOUNTING OPTIONS	LENGTH	VOLTAGE	BALLAST / DRIVER
	T5 2 = 22 1/2" 3 = 34 1/4" 4 = 46" 8 = 92"	1 = 1 2 = 2 4 = 4 (8')	14 = 4 (2' T5) 21 = 21 (3' T5) 24 = 24 (2' T5HO) 28 = 28 (4' T5) 39 = 39 (3' T5HO) 54 = 54 (4' T5HO)	SYM = Symmetric reflector SYMA = Symmetric reflector with uplight Aper- tures	MR = Maximum Reveal 97% HT = Specular OMIT for BWE	RD = Rod AC = Aircraft Cable VL = "V" Link for chain suspension (chain by others) OMIT for surface mounted	Specify length (inches)	120 = 120 Volts 277 = 277 Volts 347 = 347 Volts	IS = IS PRS = PRS RS = RS
	T8 2 = 24" 3 = 36" 4 = 48" 8 = 96"		17 = 17 (2' T8) 25 = 25 (3' T8) 32 = 32 (4' T8)						