

PEERLUX[®]
SERIES

ECR-G

 **PEERLESS[®]**
electric-électrique

INCE|PTION[®]
PEERLESS CANADA

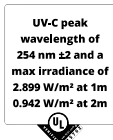
CONCEPT

The ECR-G is a **Germicidal** luminaire for **suspended** mounting with aircraft cables. Designed to help clean the air of bacteria, fungi, their spores and inactivating viruses by destroying their ability to replicate. A stylish linear fixture that provides indirect UVc disinfection. Ideal for architectural applications. Row mounting available, consult factory.

CERTIFICATION

Approved to UL1598 and CSA C22.2 No. 250 standards**

Suitable for damp locations.



*5000 hours limited warranty for lamps. ***Complies with Buy American Act.

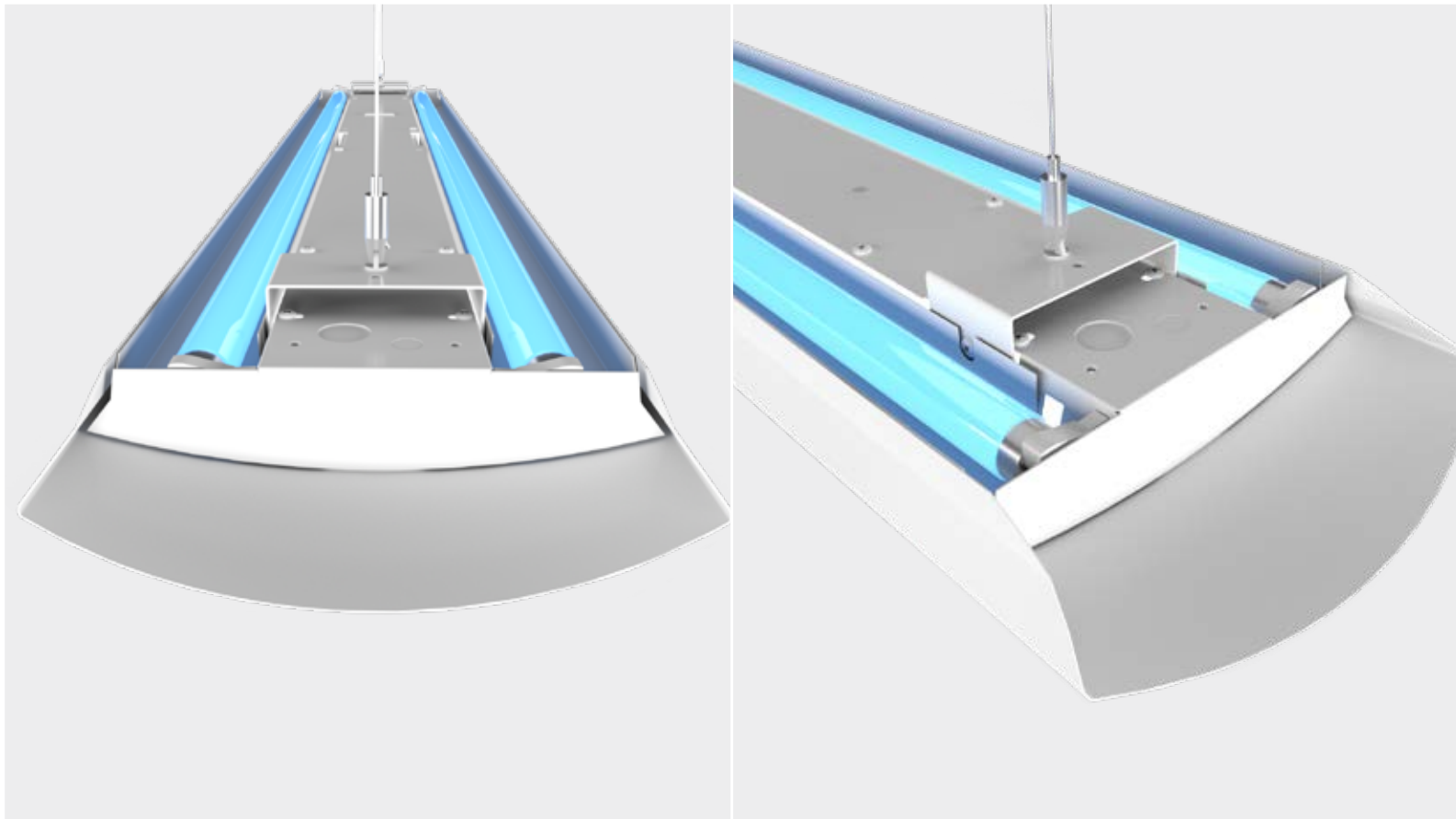
**Operating temperature: -20°C to +35°C / -4°F to +95 °F, consult factory for operating temperatures outside the listed range.

Specifications are subject to change. Please confirm latest specifications prior to placing order.



UVC TECHNOLOGY

Type C ultraviolet radiation is the shortwave of the UV spectrum, which is filtered by the atmosphere. They were found to have a very strong germicidal effect -UV-C photons penetrate cells and damage nucleic acid by breaking down the DNA/RNA of microorganism (viruses, bacteria, fungi). Radiation distorts the structure of their genetic material (predominantly by breaking weaker bonds between nucleotides) and prevents their multiplication. UV-C radiation solutions are used to reduce the spread of infectious diseases caused by viruses, bacteria and fungi. The product is intended for horizontal operation

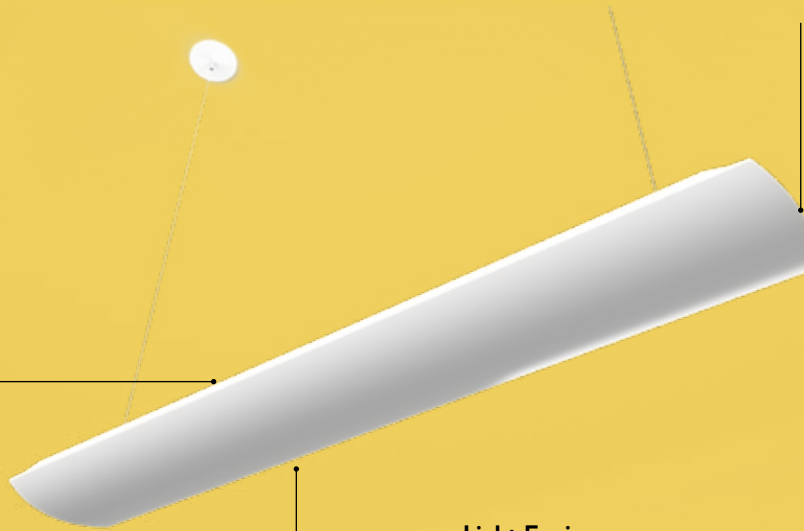


For protection, the ECR-G has a sensor that stops the radiation when it detects movements in the disinfection area.

STRUCTURE

Body

Rigid body constructed from code gauge steel. The luminaire has a ballast, two germicidal lamps and a sensor, the microwave UVC sensor interrupts the power in case of detection of movement and resumes operation after a time that can be adjusted (by DIP switch) to 10/30/90 seconds or 5/10/30 minutes (ie after this time the power will resume); cleaning duration, can be selected at 15/30/60 minutes or infinity.



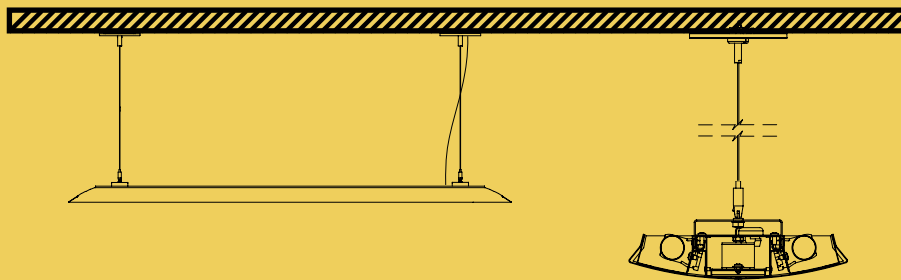
Ballast

IS (instant start), if one lamp will burn, the other will work (in the case of mounting with multiple lamps, usually two); another advantage of the IS type is that it consumes ~ 2W less per lamp.

Light Engine

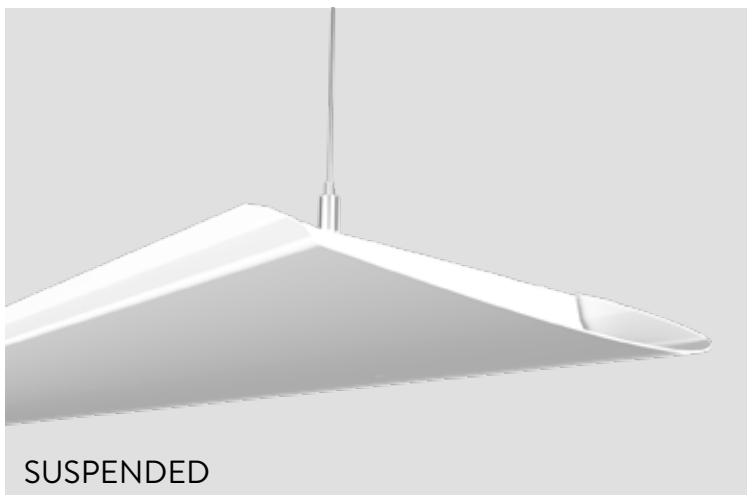
2 UVC germicidal lamps with main radiation at 254nm wavelength.

MOUNTING



SUSPENDED

Due to preventive safety measures, the luminaire will be mounted at a height of at least 7ft from the floor.



SUSPENDED





UV-C RADIATION FOR SAFETY

This luminaire turns harmful microorganisms inactive and incapable of reproducing. Radiation distorts the structure of their genetic material and prevents viral particles from producing more copies causing irreversible inactivation of harmful microorganisms. UV-C radiation helps to disinfect the air in the room by reducing* the number of:

- + Bacteria
- + Viruses
- + Mould
- + Fungi
- + Other Microorganisms

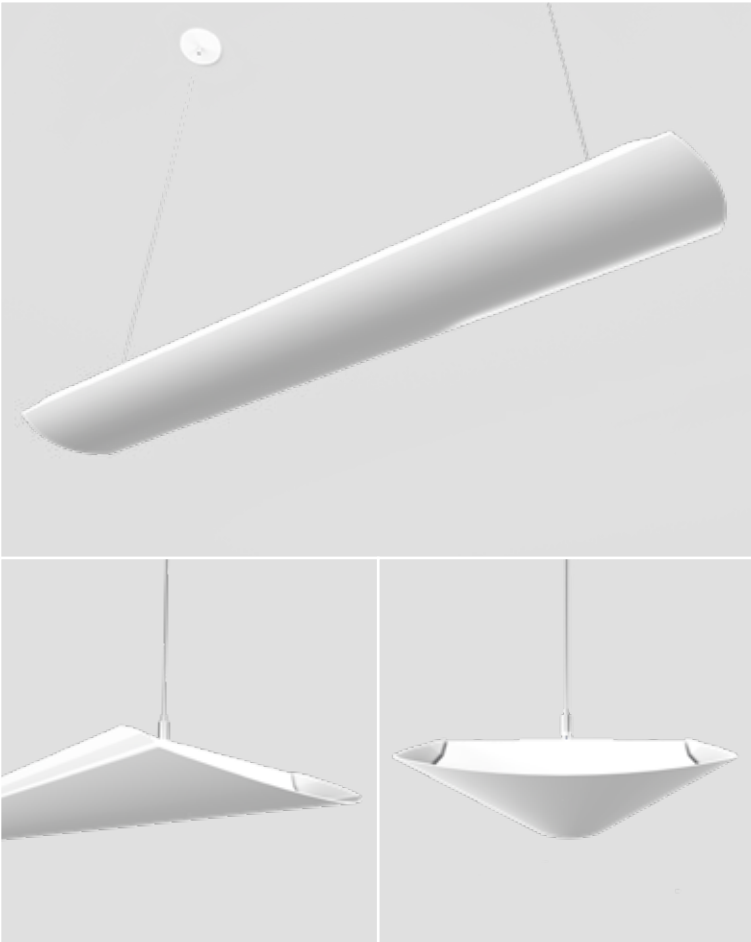
*If the appropriate dose of UVC is used





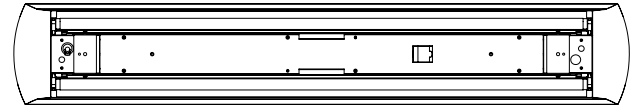
COLOR

Custom colours available, consult factory. Standard finish is white polyester baked powder coat enamel.

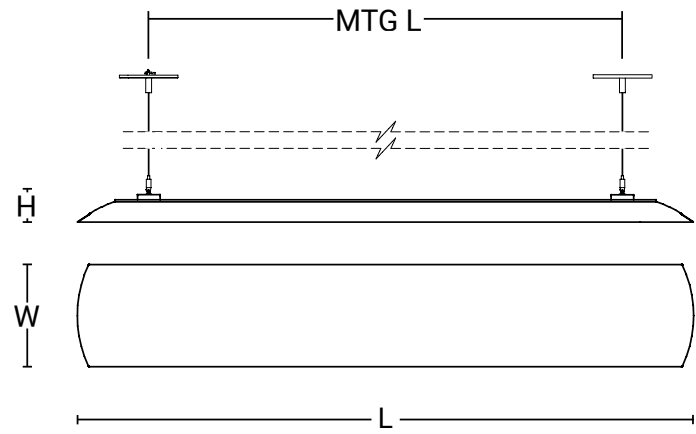


DIMENSIONS

SIZE	L	W	H	MTG L	MTG W
4FT	54.50"	9.00"	1.83"	41.94"	4.50"



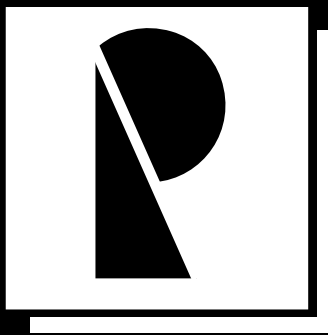
TOP VIEW



BOTTOM VIEW

ORDERING INFORMATION

ECR-G	S	4	2	G32T8		AC		X	120	IS
FIXTURE	DISTRIBUTION	MODULE (NOMINAL)	LAMPS	WATTS	FINISH	MOUNTING		SENSOR	VOLTAGE	DRIVER
	S = Solid (Indirect)	4 = 4'	2 = 2 lamps	G32T8 = Germicidal 32 Watts 1 inch diameter (T8)	GLOSSY W = White Housing B = Black Housing G = Grey Housing MATTE WM = White Housing BM = Black Housing GM = Grey Housing X = other colours and finishes available, consult factory	AC = Aircraft Cable	Specify length (Inches) *The luminaire must not be suspended at height of less than 7ft measured from the ground, for reasons of double safety (to protect the eyes and skin of nearby people if the product has no sensor or it has failed).	X = Microwave Motion Sensor, designed for UVc applications	120 = 120 Volts	IS = Instant Start



OFFICE:

255-438 Isabey
St-Laurent, QC H4T 1V3
T: 514.595.1671
F: 514.595.4411

PRODUCTION:

2900 Loyalist Str.
Cornwall, ON K6H 6C8
T: 613.510.1268
F: 613.510.1268

info@peerless-electric.com
Peerless-Electric.com